



Enrollment Forecast Report 2022

Los Alamitos Unified
School District

February 14, 2022



Overview

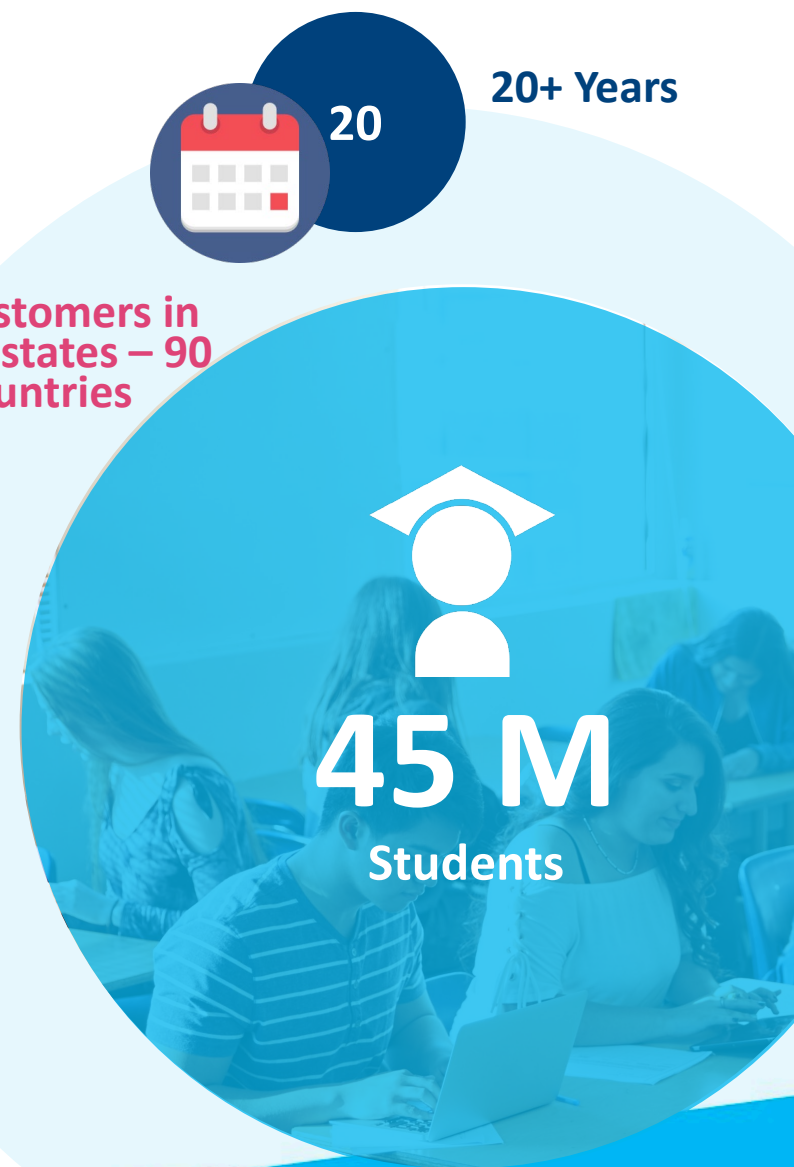
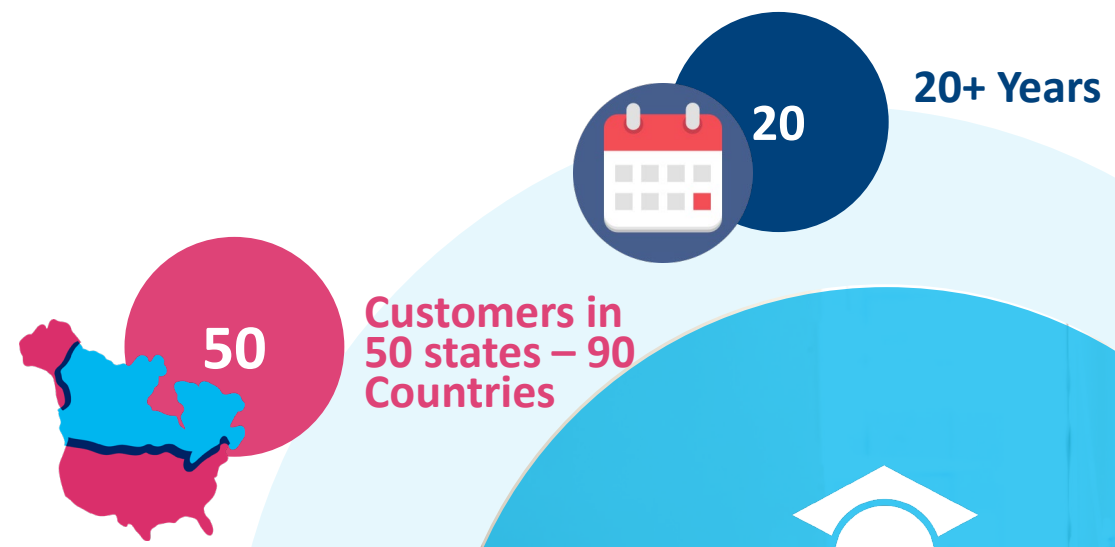
- **About Us**
- **Demographic trends affecting enrollment**
 - **Pandemic**
 - **TK Expansion**
 - **Demographic changes**
- **Our Approach and Methodology**
- **Historical Enrollment Data**
- **New Housing Data and Methodology**
 - **New Housing – Units under development**
- **Enrollment Forecasts**
- **Q&A**

About PowerSchool

PowerSchool is the leading provider of cloud-based software for K-12 education in North America. Its mission is to power the education ecosystem with unified technology that helps educators and students realize their full potential, in their way. PowerSchool, widely recognized as the most comprehensive suite of mission-critical K-12 education solutions, connects students, teachers, administrators, and parents, with the shared goal of improving student learning outcomes.

PowerSchool supports over 45 million students globally and more than 13,000 customers, including over 90 of the top 100 districts by student enrollment in the United States, and sells solutions in over 90 countries.

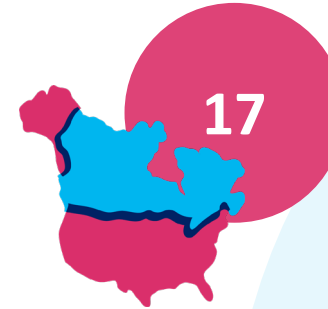
DecisionInsite became part of PowerSchool in October of 2020.



Background and History - Predictive Enrollment Analytics

Ron Van Orden

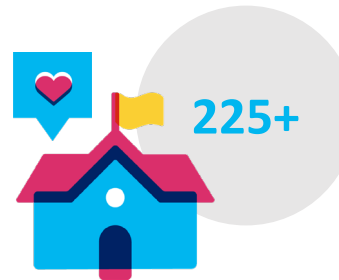
- Formerly COO, General Manager of DecisionInsite
- Solution Leader for Predictive Enrollment Analytics
- Consulted with over 60 Districts on Enrollment planning, boundary modification and school opening/consolidation
- Presented at NSBA, CSBA and CASBO conferences



Customers in
17 states



17 Years



District
Partners

27 Current
Clients in
Pennsylvania



3.1 M
Students

MacroTrends

School districts and charter school collected enrollment data on Census Day, the first Wednesday in October.

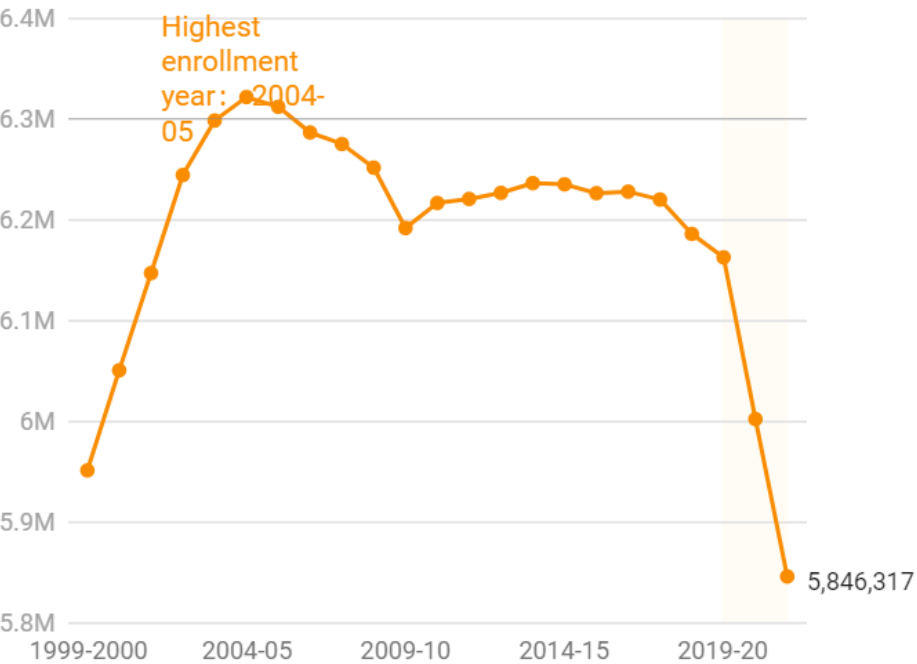
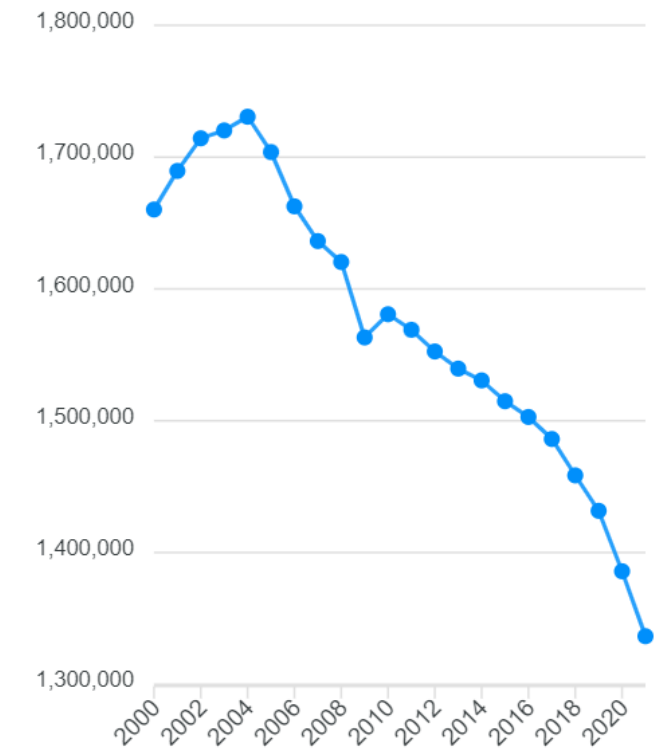
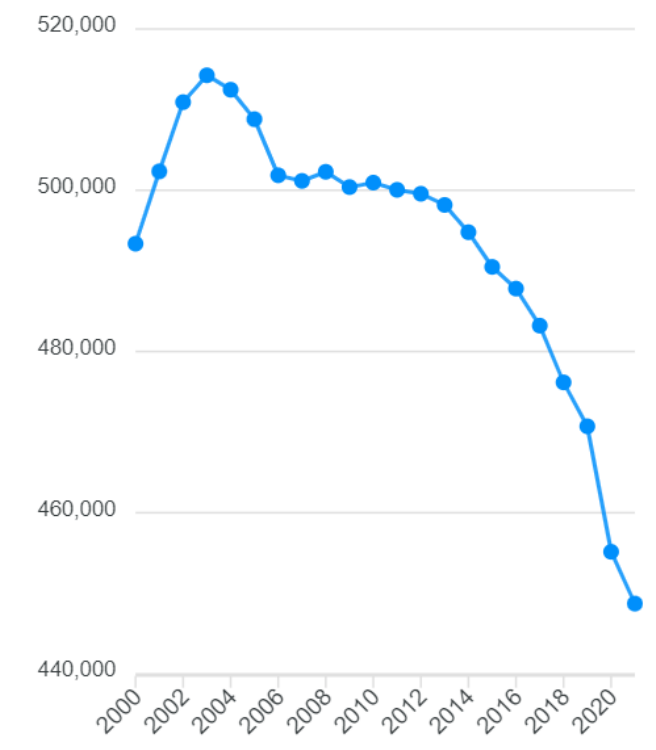


Chart: Yuxuan Xie • Source: California Department of Education • Created with [Datawrapper](#)

Choose a region: [Los Angeles County](#) ▾



Choose a region: [Orange County](#) ▾



Factors

- Declining Birth Rates
 - Families with fewer, no children
 - Generational Time – average age between parent and child is growing
 - **1970:** 21.4 years
 - **2022:** 30 years (source: Us Census bureau)
- Decrease in Net Migration
 - Fewer People migrating into California (as compared to historical averages)
- CA Dept of Finance is projecting a -11% decline in school age students by the 29-30 school year

Considerations

- Post-Pandemic changes
 - No significant bounce back in 21-22
 - Long term affects – to early to tell
- TK Expansion – will increase total students but will no reverse the systemic decline
 - How we addressed Tk expansion in our enrollment forecasts

Enrollment Forecast Methodology

➤ Factors Influencing Future Enrollment

1. Primary factors that influence calculations
 - Kindergarten
 - Aging of grade cohorts through system
 - Impact of new residential development
 - Inter-district transfers
2. Other factors that can influence
 - Private / charter school enrollment
 - Housing market
 - Anomalous events
 - Pandemic
 - TK Expansion

Enrollment Forecast

➤ Study Differences

- ❑ Two projection studies are completed each year:
 - Conservative suitable for budgeting
 - Moderate suitable for facilities planning

- ❑ Methodology Differences:
 - For Kindergarten and for each grade level cohort change, the algorithm determines for each Studyblock, two mathematically supportable trends based on the 4-year history
 - The lesser of the two trends is applied to the conservative study; the greater to the moderate

- ❑ Similar viable differentiations, applied similarly, are made for:
 - Incoming out of district transfers
 - Students generated by proposed residential development, if any

Historical Enrollment Analysis

- This 4-year historical changes graph shows the growth or contraction of grade band cohorts within the district.

4 Year History Change	
Kindergarten	88%
Gr K-5	92%
Gr 6-8	89%
Gr 9-12	101%
District (K-12)	94%

Historical Enrollment Analysis

➤ This graph shows changes in cohorts entering and exiting your District

Percent Change of Previous Year			
	2019	2020	2021
Kindergarten	103%	84%	101%
Grade 12 to K	83%	70%	68%
Total K-12	100%	96%	98%

Residential Development Research

➤ How Does Residential Development Research Work?

1. Each summer our residential development team reviews the status of new housing in the district
2. We begin in June by contacting the district for any updates, references, developer fee lists, etc. that can help compile an accurate research list
3. We then contact each city and/or town planning department(s) to compile a list of active and future projects
4. In turn, we drill down to the developers associated with each project whenever possible for the most recent considerations regarding dwelling unit types and occupancy timelines
5. This information is then compiled and presented to the district for feedback prior to beginning enrollment projections

RESIDENTIAL DEVELOPMENT RESEARCH REPORT

FALL 2021

PREPARED FOR:
LOS ALAMITOS UNIFIED SCHOOL DISTRICT

PREPARED BY:
DECISION INSITE
Enrollment Impact Specialists

SUBMITTED: DECEMBER 13, 2021

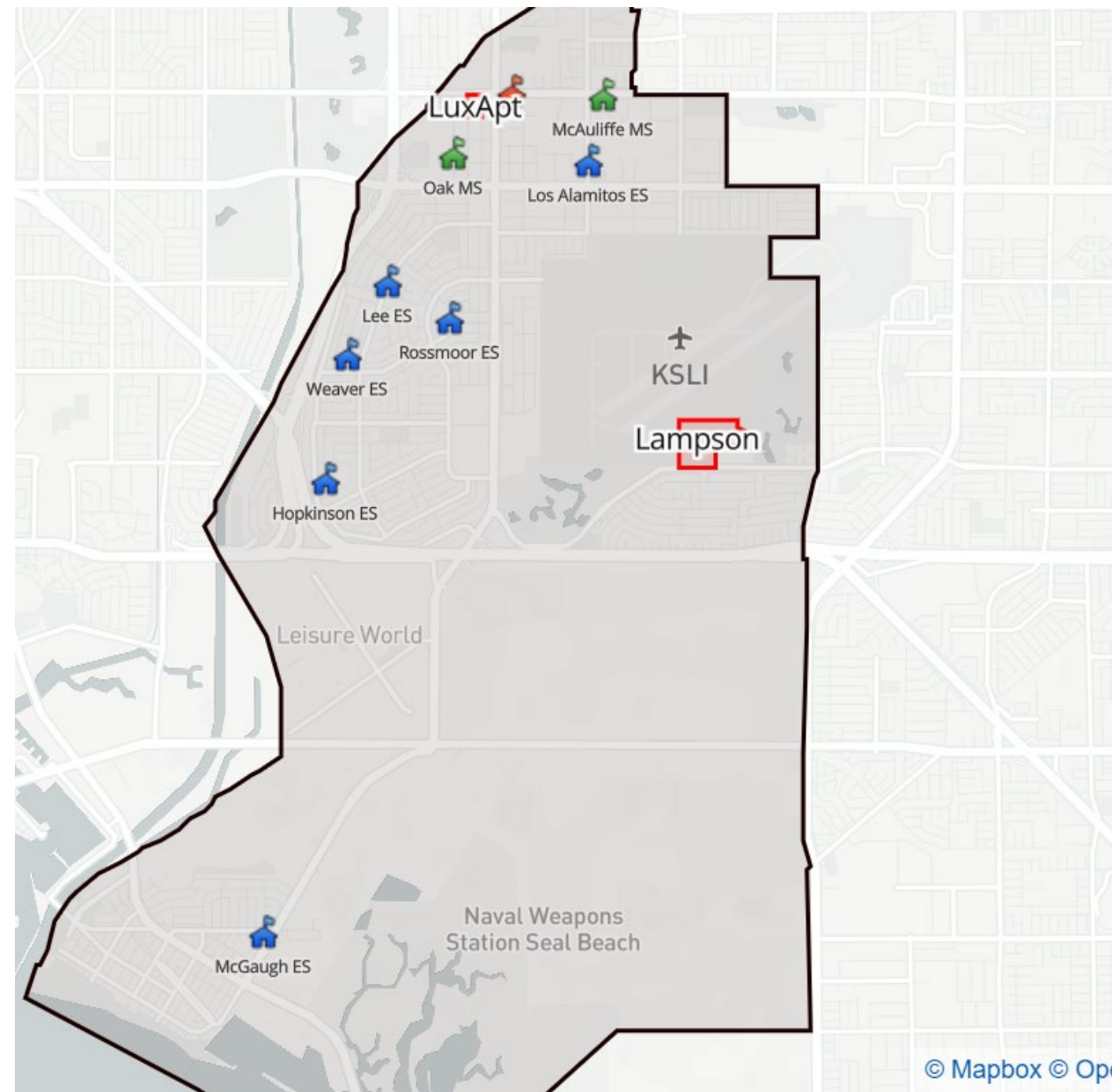
Residential Development Research

➤ **New Housing – Units under development**

ProjectName	Type	2022	2023	2024	2025	2026	2027	2028	2029	2030	2031
Lampson Project	Single Unit Detached	0	80	80	80	50	50	32	0	0	0
Los Alamitos Luxury Apartments	Multi-family	100	7	0	0	0	0	0	0	0	0
	Multi-family:	100	7	0	0	0	0	0	0	0	0
	Single Unit Detached:	0	80	80	80	50	50	32	0	0	0
	Total:	100	87	80	80	50	50	32	0	0	0

Residential Development Research

- New Housing – Units under development



Enrollment Forecast

CONSERVATIVE 5 YEAR DISTRICT-WIDE PROJECTION BY GRADE LEVEL

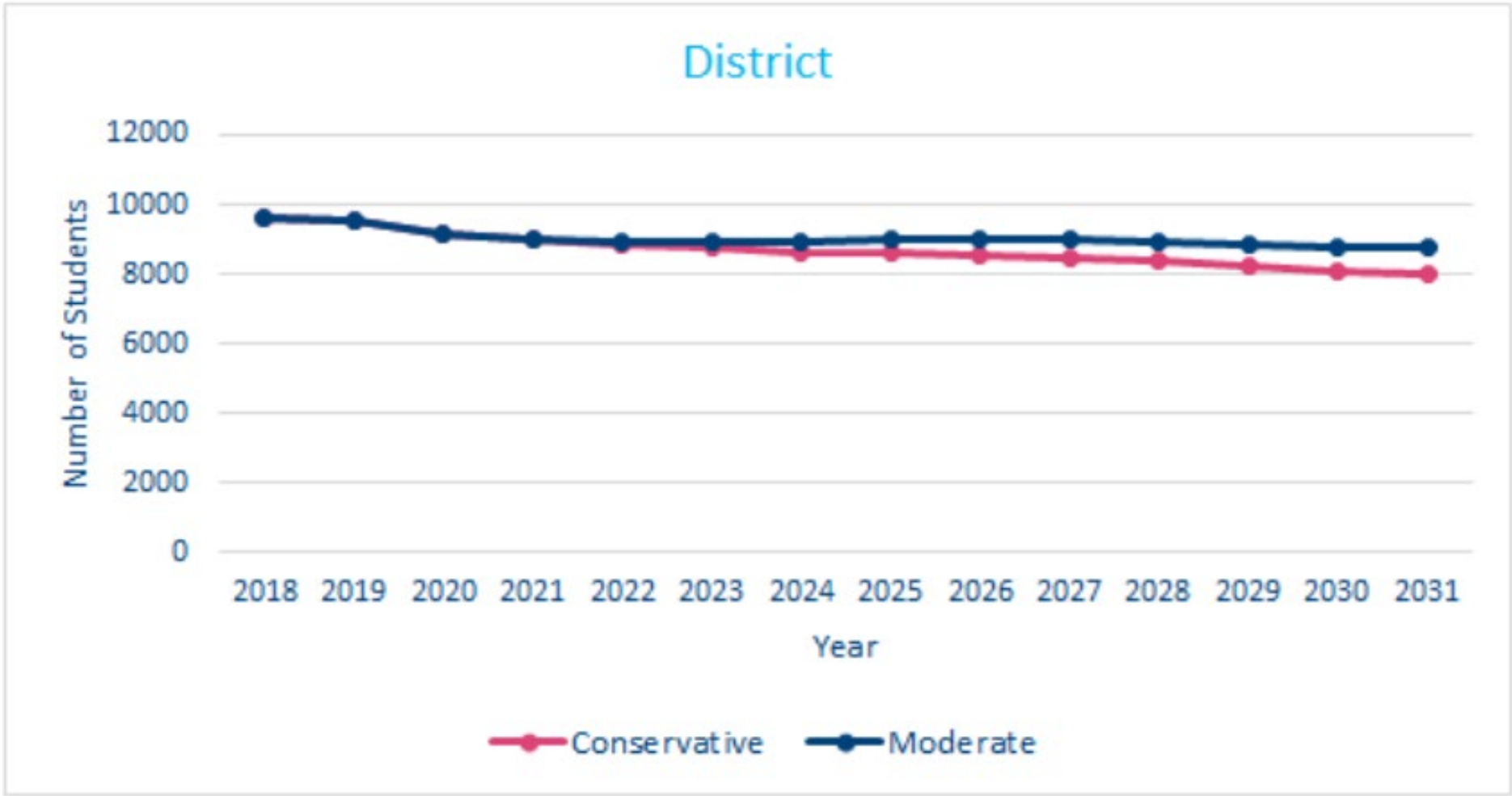
Grade	2021	2022	2023	2024	2025	2026
TK	124	196	274	352	473	469
K	530	520	517	518	522	517
1	561	537	529	526	527	530
2	624	563	540	532	530	529
3	580	626	567	545	537	532
4	670	582	630	572	548	539
5	621	678	589	639	580	552
6	694	642	699	619	669	622
7	664	704	651	711	627	675
8	745	667	706	654	713	629
9	791	763	741	771	728	784
10	827	777	749	729	758	723
11	774	806	761	734	715	751
12	767	765	796	752	726	711
Subtotals:	8972	8826	8749	8654	8653	8563
Pct Chg:	-1.7%	-1.6%	-0.9%	-1.1%	0.0%	-1.0%
SDC:	130	127	124	123	120	117
Totals:	9102	8953	8873	8777	8773	8680

Enrollment Forecast

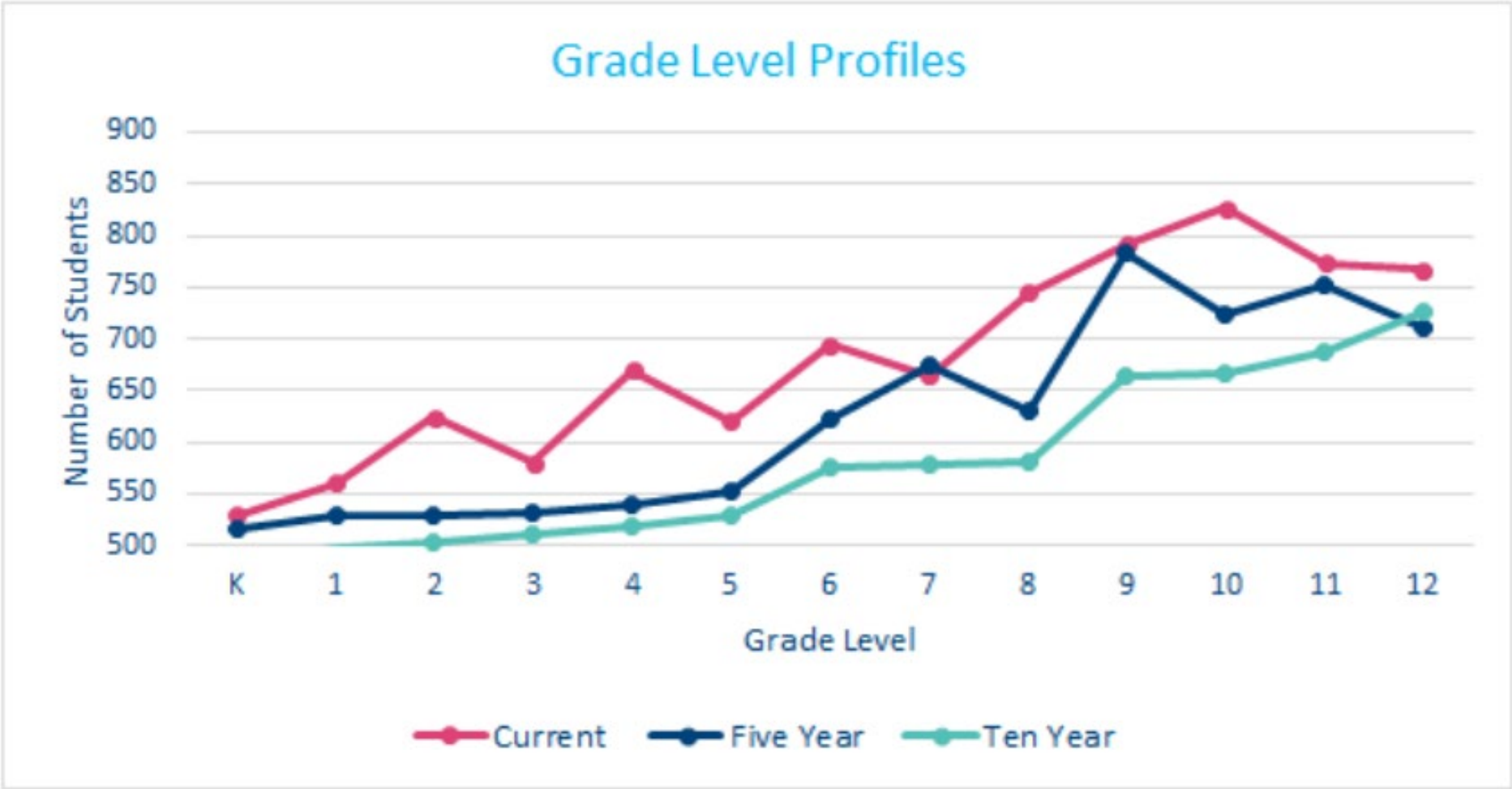
MODERATE 5 YEAR DISTRICT-WIDE PROJECTION BY GRADE LEVEL

Grade	2021	2022	2023	2024	2025	2026
TK	124	204	287	372	501	505
K	530	541	543	547	552	557
1	561	549	562	564	568	572
2	624	567	556	570	572	573
3	580	633	577	568	581	578
4	670	587	644	588	577	587
5	621	682	599	657	600	583
6	694	648	709	633	694	648
7	664	711	663	729	648	704
8	745	671	718	671	736	652
9	791	764	745	784	749	812
10	827	780	754	737	774	745
11	774	812	770	743	727	770
12	767	768	806	764	738	725
Subtotals:	8972	8917	8933	8927	9017	9011
Pct Chg:	-1.7%	-0.6%	0.2%	-0.1%	1.0%	-0.1%
SDC:	130	129	126	127	126	123
Totals:	9102	9046	9059	9054	9143	9134

Enrollment Forecast



Enrollment Forecast



Enrollment Forecast – Schools with Significant Change

School	5-Yr Pct Change	10-Yr Pct Change
Hopkinson ES	-26%	-31%
Los Alamitos ES	-11%	-16%
McAuliffe MS	-10%	-17%
Lee ES	-10%	-14%
McGaugh ES	-9%	-15%

Q & A